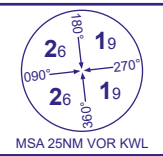


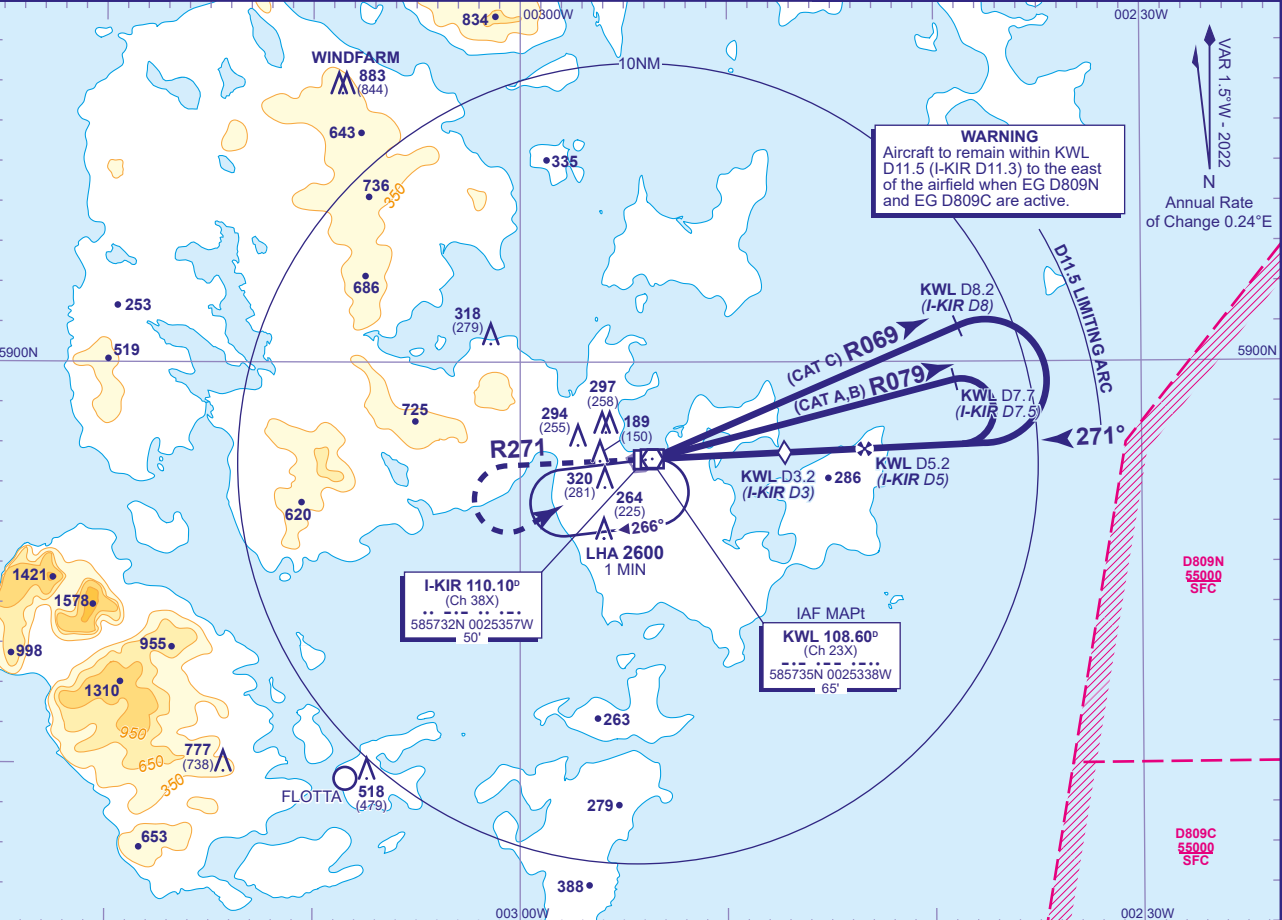
INSTRUMENT APPROACH CHART - ICAO

KIRKWALL VOR/DME RWY 27 (ACFT CAT A,B,C)



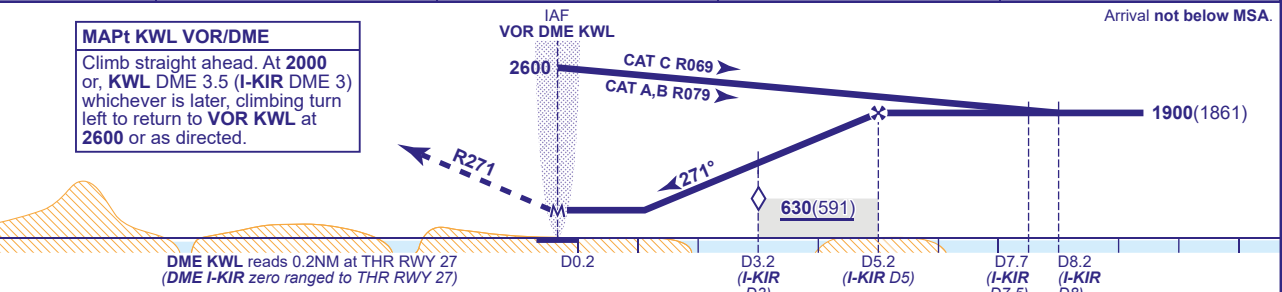
APP	118.305	KIRKWALL APPROACH	AD ELEVATION	58
TWR	118.305	KIRKWALL TOWER	THR ELEVATION	39
AFIS	118.305	KIRKWALL INFORMATION	OBSTACLE ELEVATION	883 AMSL (844) (ABOVE THR)
ATIS	124.130	KIRKWALL INFORMATION	BEARINGS ARE MAGNETIC	

TRANSITION ALTITUDE 3000



RECOMMENDED PROFILE Gradient 6%, 360FT/NM

DME KWL (I-KIR)	4(3.8)	3.2(3) (SDF)	3(2.8)	2(1.8)
ALT(HGT)	1460(1421)	1170(1131)	1100(1061)	740(701)



Aircraft Category		A	B	C	Rate of descent	G/S KT	160	140	120	100	80
OCA (OCH)	Procedure	430(391)	430(391)	430(391)		FT/MIN	970	850	720	600	480
VM(C)OCA (OCH AAL)	Total Area	650(592)	660(602)	1250(1192)							
	South of RWY 09/27	650(592)	660(602)	760(702)							

NOTE FAT offset 2° north.

CHANGE (1/24): ATIS FREQUENCY REVISED.